

Ian Sanderson

EST. 1962





JULIAN & HELEN SANDERSON



Ian Sanderson is a family-run British textile house with over 60 years of expertise, blending heritage and innovation to create exceptional fabrics for high-end interior designers.

Founded in 1962 by Ian Sanderson, the company has become a champion of pattern, color, and design. Today, under the leadership of CEO Julian Sanderson and Creative Director Helen Sanderson, we remain dedicated to crafting collections that tell captivating design stories.

Our fabrics, primarily crafted from natural linens and cottons, celebrate the inherent beauty and texture of natural yarns, ensuring every weave is both distinctive and alluring. From our West Berkshire home, we collaborate with British and international mills, uniting traditional techniques with modern innovation to produce stylish and beautiful textiles.

Drawing inspiration from cultural and historical references, Helen Sanderson's designs reinterpret classic English aesthetics through a contemporary lens. Each collection is thoughtfully curated to add originality and character to interiors worldwide.

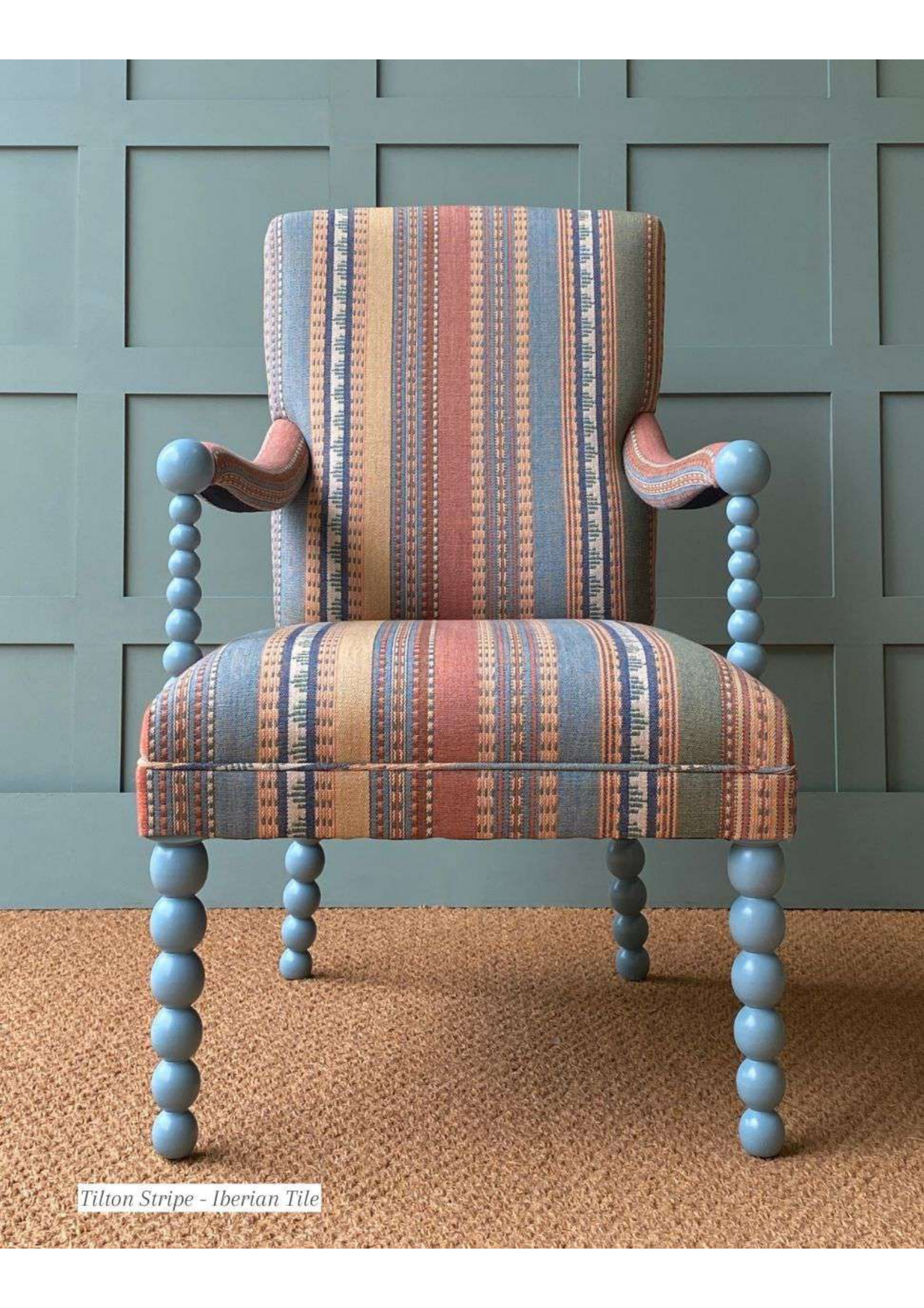
With a legacy built on creativity and craftsmanship, Ian Sanderson continues to honor its founder's vision - offering unique, high-quality fabrics that inspire and elevate every space they adorn.







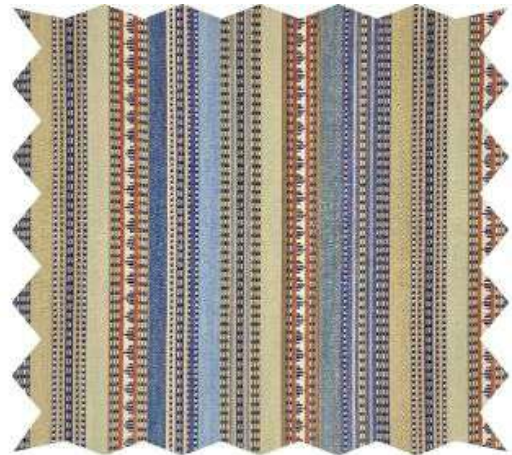
Friday Club



Tilton Stripe - Iberian Tile



Barbican - Folk



Tilton Stripe - Seaford



Sylvan - Ravenna



Juni Stripe - Terracotta



Florella Velvet - Blue Moss



Palm Wave - Deep Sea



Stitch & Block



Mallow Border - Bordeaux



Pomona - Havana



Shiraz - Confetti



Persian Daisy - Buttermilk





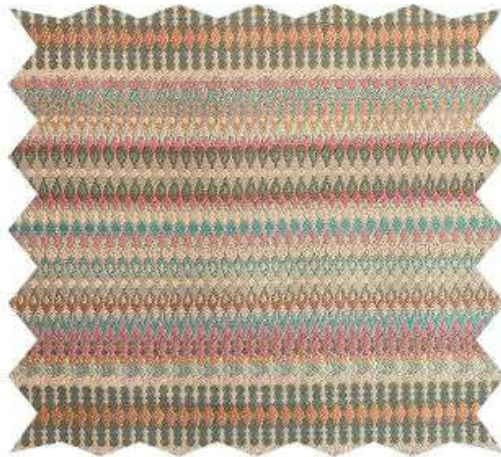




Poppinjay II



Lord Velvet - Amber



Inca - Rosy Grey



Posie - Brook



Poppinjay - Thirties Blue Green



Lundy Stripe - Paradise



Bayley Plaid - Teal



Posie - Sage







Chatterpie Linen - Hana Blue



Chatterpie Velvet - Tiger Moth



Chiffchaff Plaid - Robin Red





Wagtail Plaid - Sandstone



Chatterpie Linen - Berbere



Somana - Aztec





Callow Stripe - Thyme



Jessamy Paisley - Cerulean



Peverell Check - Blue



Coulibri



Jessamy Paisley - Musk Rose



Peverell Check - Tarn



Pyjama Stripe - Falcon





Summer Vibes

Indoor/Outdoor Performance



Somana Indoor/Outdoor - Strawberry Daiquiri



Melograno Indoor/Outdoor - Talkin Blue



Vibe Indoor/Outdoor - Cherry Sundae



Somana Indoor/Outdoor - Blue Lagoon

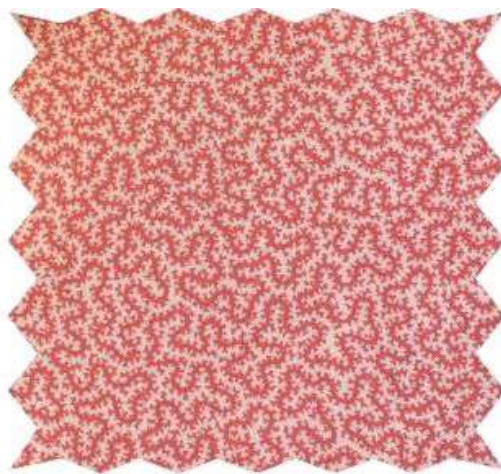




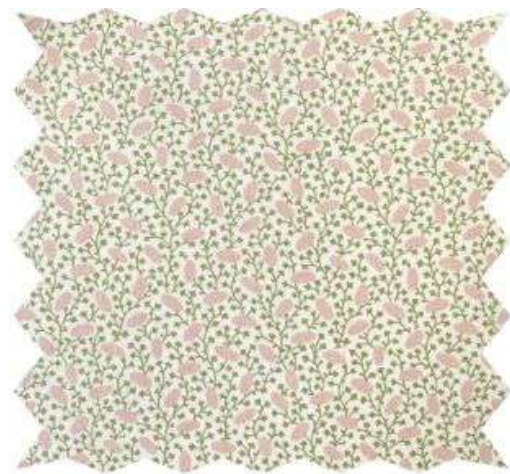
With Complements



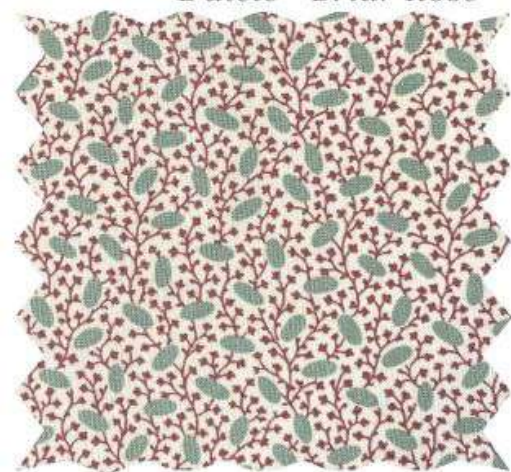
Dulcie - Briar Rose



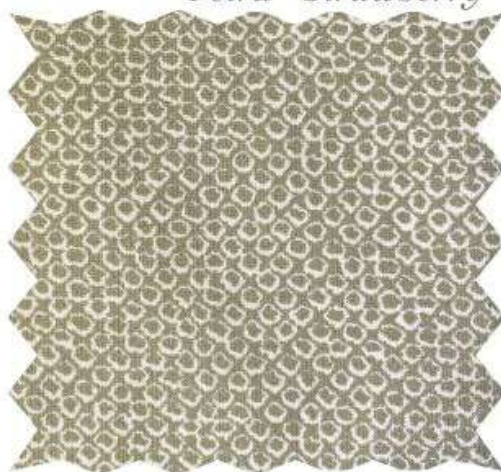
Petra - Strawberry



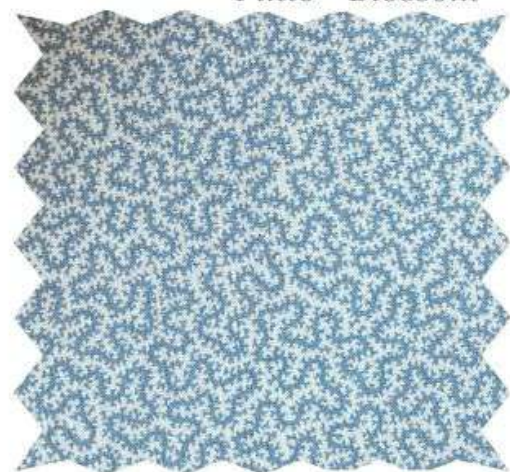
Pinto - Blossom



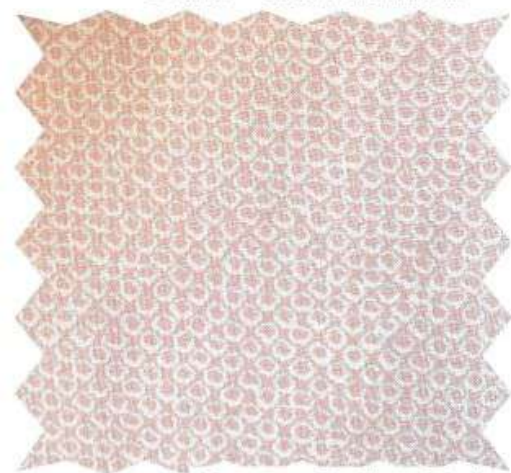
Pinto - Rose Mallow



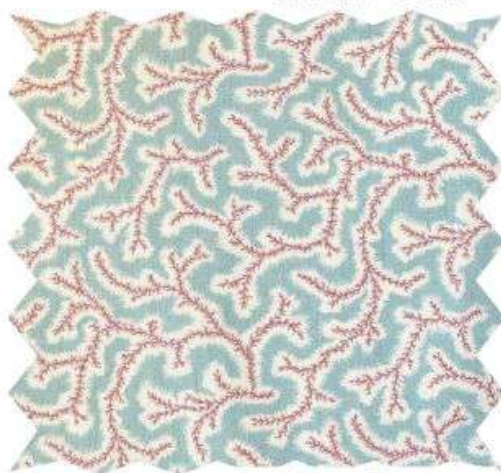
Nesta - Pear



Petra - Beck



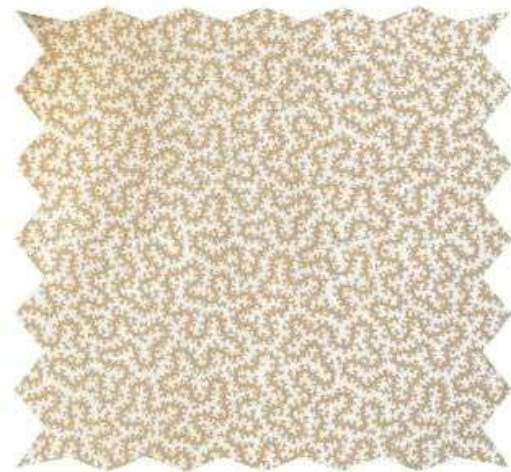
Nesta - Ballet Pink



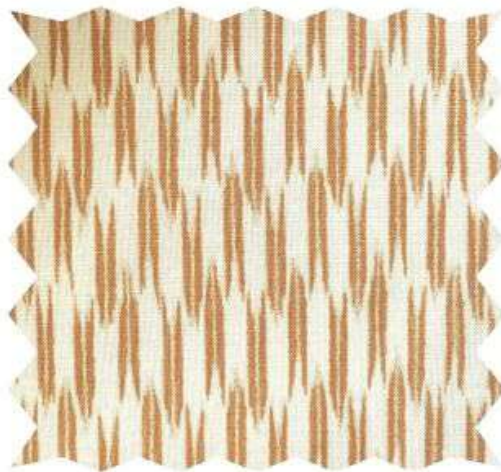
Dulcie - Havana



Quiver - Indigo



Petra - Popcorn



Quiver - Honey



Dulcie - Stilton



With Complements Lampshades



Lampshade in Quiver - Cherry

Lampshade in Pinto - Aztec

Lampshade in Petra - Strawberry



Lampshade in Quiver - Indigo

Lampshade in Petra - Membrillo

Lampshade in Dulcie - Briar Rose



Mallow Border Lampshades



Lampshade in Mallow Border - Bordeaux



Lampshade in Mallow Border - Cayenne



Lampshade in Mallow Border - Chilli



Lampshade in Mallow Border - Cortez



Lampshade in Mallow Border - Sea Kelp



Lampshade in Mallow Border - Thrift Pink







Ian Sanderson

WWW.IANSANDERSON.CO.UK

ENQUIRIES@IANSANDERSON.CO.UK